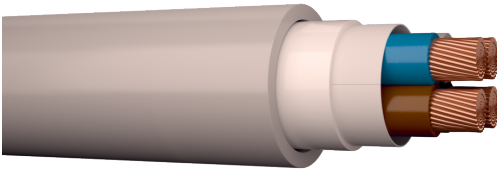


Building wire 300/500 V

Afumex Plus 500



Application

Halogen-free, fire retardant and UV-stabilized building wire for fixed installation indoors in walls, trays, ducts or outdoors in pipes, air or directly in the ground. Not suitable for installation in vibrated concrete. Afumex Plus is listed in the database over building materials suitable for Svanemärket certified buildings.

Flame retardance

IEC 60332-1-2 - Vertical flame propagation for a single insulated wire or cable

Approval

CE

Standard

EN 50363
EN 60228
EN 50575:2014
EN 50267-1
EN 50267-2-3
IEC 61034-1-2

Design standard
Conductor standard
Cables for general applications in construction works subject to reaction to fire requirements
Halogen free material
Corrosive gases
Material Standard for smoke

Construction

Cable Shape
Conductors

Round
1,5 - 2,5mm² - Solid annealed copper acc. to IEC 60228 Cl. 1. >6mm² Strandet annealed copper wires acc. to IEC 60228 Cl. 2.

Conductor Insulation
Marking of cores

XLPE
1 G: Yellow/green
3 G: Yellow/green, blue, brown
4 G: yellow/green, blue brown, black
4 X: Blue, brown, black, grey
5 G: Yellow/green, blue, brown, black, grey
7 G: Yellow/green, blue, brown, black, grey, red, white
Halogen free compound, UV resistant.
Light grey and meter marked

Outer Sheath

Temperature

Maximum operating Temperature 90°C
Minimum operating Temperature for cable type - 40°C
[°C]
Temperatures at installation [°C] min. -5°C to 50°C

Features

CPR Performance class

Class Eca - DoP (Finland) 1001858
Webpage dk.prysmiangroup.com/dop

UV resistance
Additional Feature Information
Bending radius
REACH/SVHC declaration
RoHS declaration

UV stabilized
HD 64364-5-52:2011 table B.52.12
< 25mm: 4 x D, 25mm≤D≤50mm: 5 x D, >50mm: 6 x D
Meet the demand for REACH
Meet the demand for RoHS

ElectricalMax. short circuit temperature [°C]
Test Voltage [kV]250 °C
2 kV AC

Conductors and screen area [mm ²]	Diameter over sheath [mm]	Cable weight [kg/km]	DC Resistance at +20°C [Ω/km]	Standard delivery length [m]	Delivery Package	EAN/GTIN number	Max current load in air [A]
1G2.5	6	55	7,41	100	R100	4741532910400	36
1G2.5	6	55	7,41	500	K6 500	6430010754046	36
1G6	7	95	3,08	50	R 50	4741532901811	63
1G10	8	140	1,83	500	K6 500	4741532910448	86
1G10	8	140	1,83	50	Ring	4741532901828	86
1G16	9	200	1,15	500	K6 500	6430010754077	115
3G1.5	8	100	12,1	100	R100	4741532910462	26
3G1.5	8	100	12,1	500	K6 500	4741532910479	26
3G2.5	9	140	7,41	100	R100	4741532910493	36
3G2.5	9	140	7,41	500	K6 500	4741532910509	36
4X6	15	390	3,08	500	K7 500	4741532910608	54
4X10	17	580	1,83	500	K6 250	4741532910622	75
4X10	17	580	1,83	500	K8 500	4741532910615	75
4X16	20	840	1,15	500	K9 500	4741532910639	100
5G1.5	9,5	145	12,1	100	R100	4741532910653	23
5G1.5	9,5	145	12,1	500	K6 500	4741532910660	23
5G2.5	10,5	205	7,41	100	R100	4741532910684	32
5G2.5	10,5	205	7,41	500	K6 500	4741532910691	32
5G6	16	460	3,08	500	K6 500	4741532910721	54
5G6	16	460	3,08	500	K6 250	4741532910714	54
5G10	19	710	1,83	500	K9 500	4741532910738	75
5G16	22	1050	1,15	500	K11 500	4741532910745	100
7G1.5	9,5	165	12,1	100	R100	4741532910752	18
7G1.5	9,5	165	12,1	500	K6 500	4741532910769	18